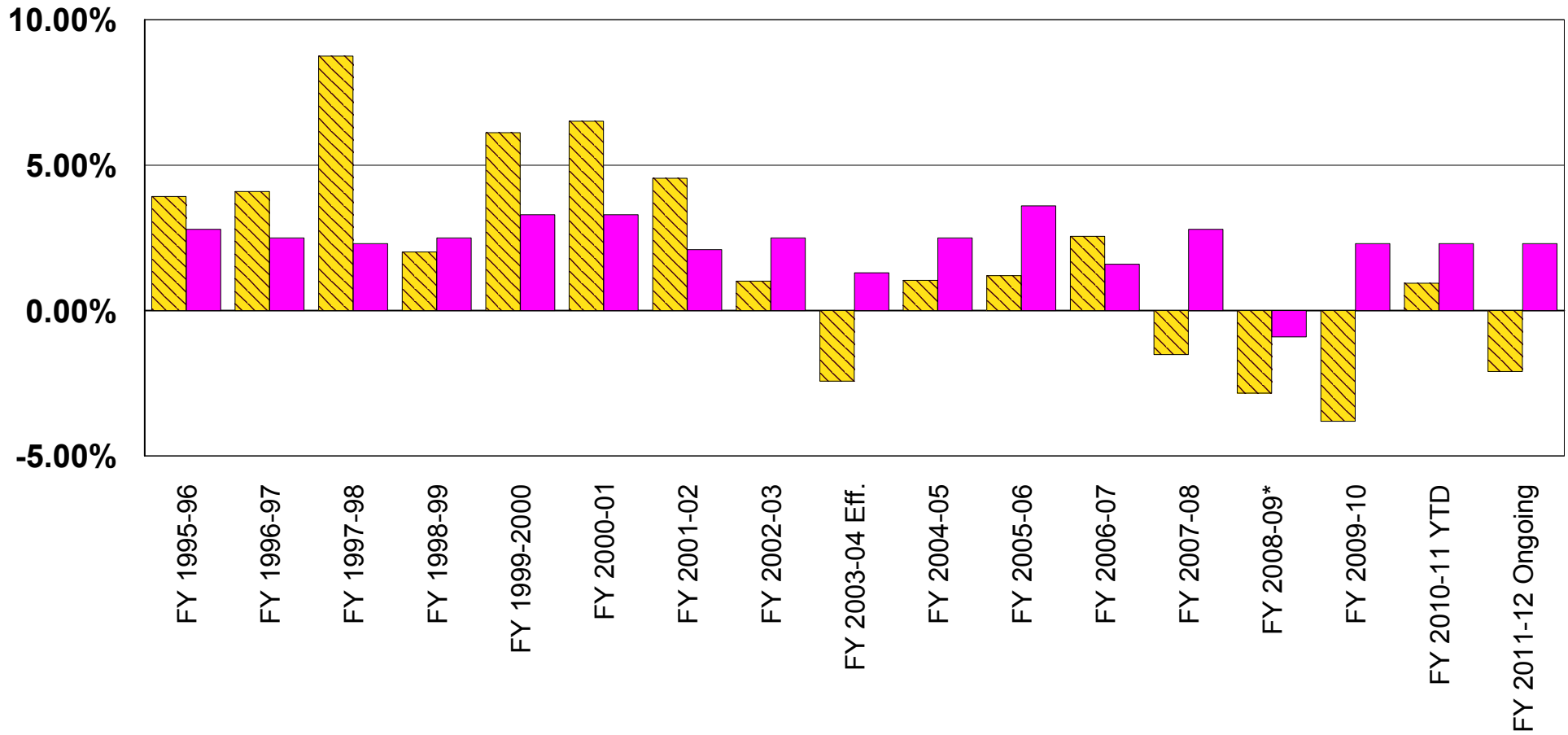


**K-12 Budget Bill Appropriations History
FY 1993-94 through FY 2011-12**

	<u>State Funding in K-12</u>	<u>Percent Change in State Funding</u>	<u>Detroit Area CPI</u>	<u>Diff. Btw. State Funding and CPI Pcts.</u>
FY 1993-94	3,910,021,700	N/A	N/A	N/A
FY 1994-95	7,911,782,300	102.35%	3.20%	99.15%
FY 1995-96	8,221,896,400	3.92%	2.80%	1.12%
FY 1996-97	8,558,294,800	4.09%	2.50%	1.59%
FY 1997-98	9,307,407,000	8.75%	2.30%	6.45%
FY 1998-99	9,495,075,400	2.02%	2.50%	-0.48%
FY 1999-2000	10,075,829,300	6.12%	3.30%	2.82%
FY 2000-01	10,732,285,000	6.52%	3.30%	3.22%
FY 2001-02	11,220,561,700	4.55%	2.10%	2.45%
FY 2002-03	11,334,551,600	1.02%	2.50%	-1.48%
FY 2003-04 Eff.	11,059,287,100	-2.43%	1.30%	-3.73%
FY 2004-05	11,173,900,000	1.04%	2.50%	-1.46%
FY 2005-06	11,308,027,200	1.20%	3.60%	-2.40%
FY 2006-07	11,596,963,200	2.56%	1.60%	0.96%
FY 2007-08	11,421,776,200	-1.51%	2.80%	-4.31%
FY 2008-09*	11,097,798,200	-2.84%	-0.90%	-1.94%
FY 2009-10	10,675,097,700	-3.81%	2.30%	-6.11%
FY 2010-11 YTD	10,775,902,900	0.94%	2.30%	-1.36%
FY 2011-12 Ongoing	10,550,241,100	-2.09%	2.30%	-4.39%
FY 1994-95 through FY 2011-12	2,638,458,800	33.35%	45.22%	-11.87%

*In FY 08-09, \$341 million of State funding was added to offset lower local tax revenues from changes in the MI Business Tax; without this, State funding declined 5.8%.

Comparison of K-12 State Funding Percentage Increases and Detroit CPI



*In FY 08-09, \$341 million of State funding was added to offset lower local tax revenues from changes in the MI Business Tax; without this, State funding declined 5.8%.

State Funding

CPI